



Performance Report for: <https://smayerlaw.com/>

Report generated: Wed, May 3, 2023 11:16 AM -0700
 Test Server Location: Vancouver, Canada
 Using: Chrome (Desktop) 103.0.5060.134, Lighthouse 9.6.4

A	Performance 92%	Structure 86%	L. Contentful Paint 1.3s	T. Blocking Time 0ms	C. Layout Shift 0.12
----------	---------------------------	-------------------------	------------------------------------	--------------------------------	--------------------------------

Top Issues

IMPACT	AUDIT	
Med	Serve static assets with an efficient cache policy	Potential savings of 1.19MB
Med-Low	Use a Content Delivery Network (CDN)	26 resources found
Med-Low	Avoid CSS @import FCP LCP	1 resource found
Med-Low	Efficiently encode images	Potential savings of 741KB
Low	Eliminate render-blocking resources FCP LCP	Potential savings of 120ms

Page Details



Total Page Size - 1.37MB



Total Page Requests - 36



HTML JS CSS IMG Video Font Other

How does this affect me?

Today's web user expects a fast and seamless website experience. Delivering that fast experience can result in increased visits, conversions and overall happiness.

As if you didn't need more incentive, **Google has announced that they are using page speed in their ranking algorithm.**

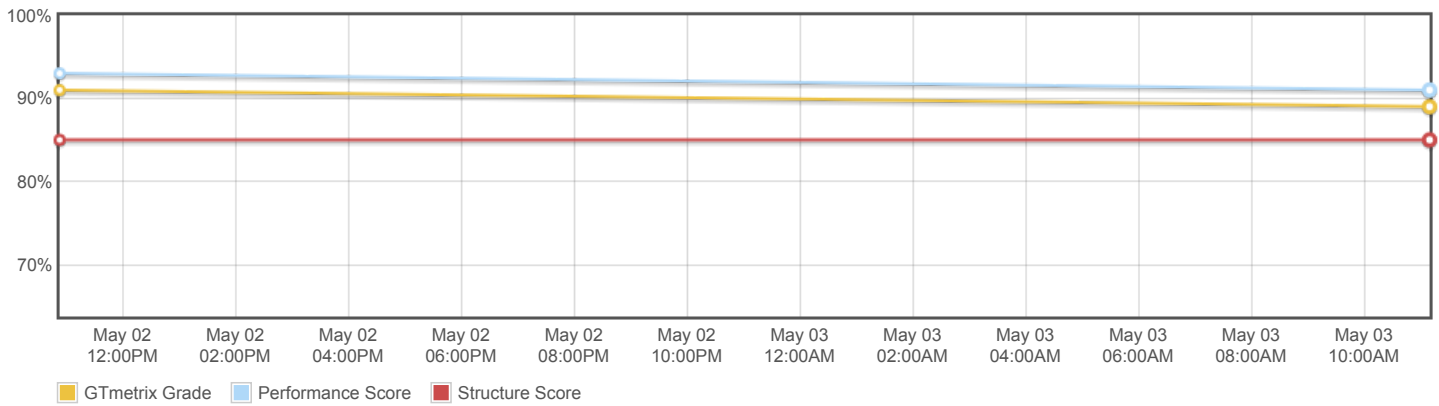
About GTmetrix

CARBON60
THE MANAGED CLOUD COMPANY

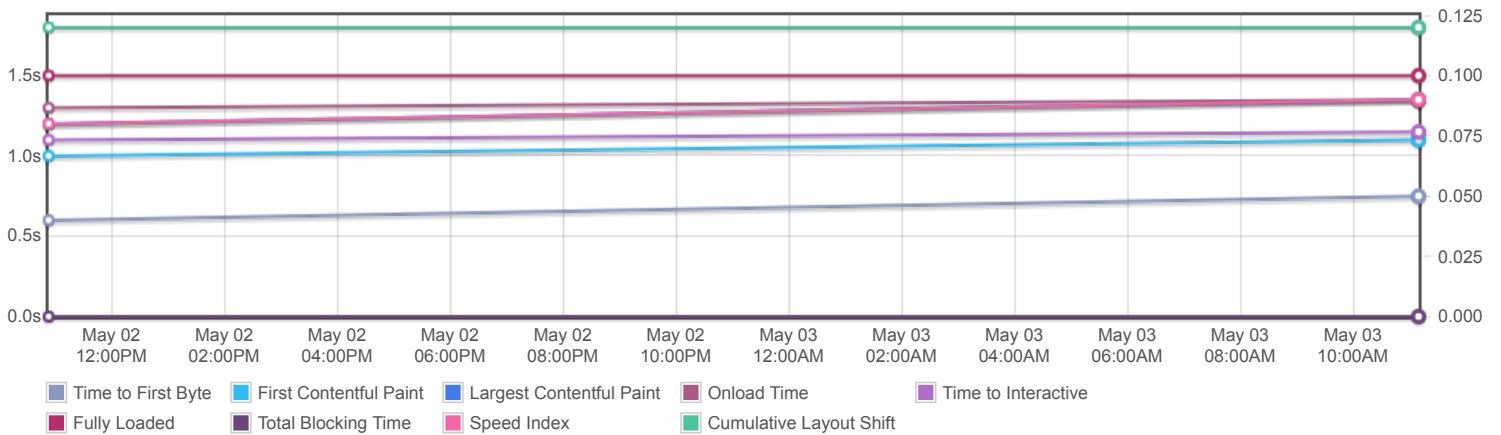
GTmetrix is developed by the good folks at **Carbon60**, a Canadian hosting company with over 27 years experience in web technology.

<https://carbon60.com/>

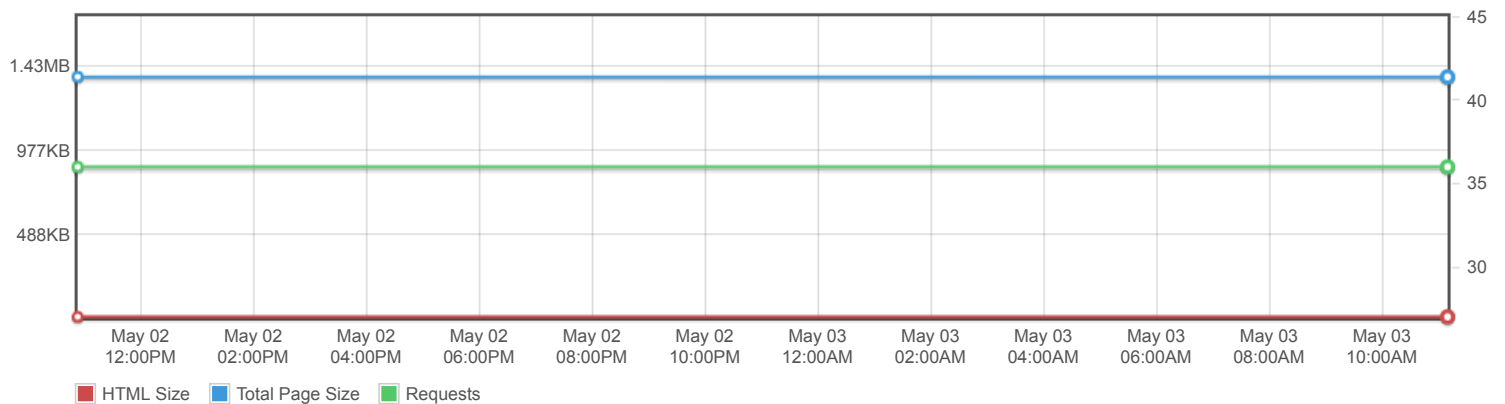
Page scores



Page metrics

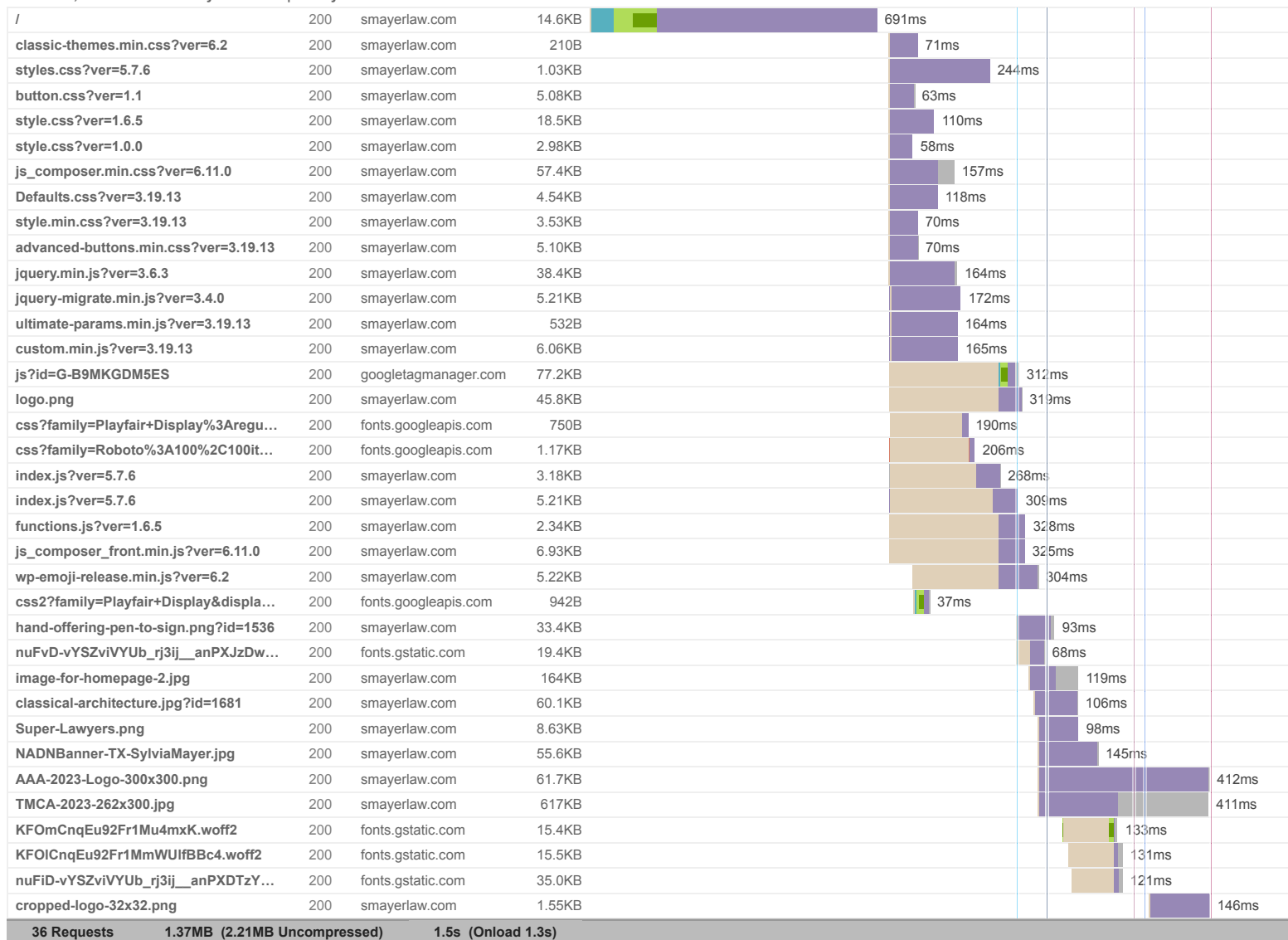


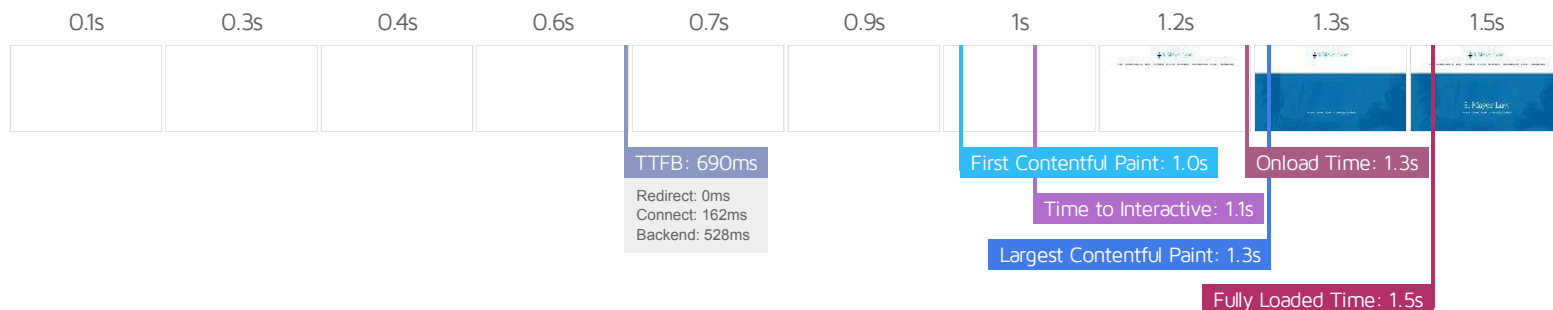
Page sizes and request counts



The waterfall chart displays the loading behaviour of your site in your selected browser. It can be used to discover simple issues such as 404's or more complex issues such as external resources blocking page rendering.

Arbitrator, Mediator & Attorney - Houston | S. Mayer Law





Performance Metrics

First Contentful Paint How quickly content like text or images are painted onto your page. A good user experience is 0.9s or less.	OK, but consider improvement 1.0s	Time to Interactive How long it takes for your page to become fully interactive. A good user experience is 2.5s or less.	Good - Nothing to do here 1.1s
Speed Index How quickly the contents of your page are visibly populated. A good user experience is 1.3s or less.	OK, but consider improvement 1.3s	Total Blocking Time How much time is blocked by scripts during your page loading process. A good user experience is 150ms or less.	Good - Nothing to do here 0ms
Largest Contentful Paint How long it takes for the largest element of content (e.g. a hero image) to be painted on your page. A good user experience is 1.2s or less.	OK, but consider improvement 1.3s	Cumulative Layout Shift How much your page's layout shifts as it loads. A good user experience is a score of 0.1 or less.	OK, but consider improvement 0.12

Browser Timings

Redirect	0ms	Connect	162ms	Backend	528ms
TTFB	690ms	First Paint	1.0s	DOM Int.	1.1s
DOM Loaded	1.1s	Onload	1.3s	Fully Loaded	1.5s

IMPACT	AUDIT	
Med	Serve static assets with an efficient cache policy	Potential savings of 1.19MB
Med-Low	Use a Content Delivery Network (CDN)	26 resources found
Med-Low	Avoid CSS @import <small>FCP</small> <small>LCP</small>	1 resource found
Med-Low	Efficiently encode images	Potential savings of 741KB
Low	Eliminate render-blocking resources <small>FCP</small> <small>LCP</small>	Potential savings of 120ms
Low	Avoid large layout shifts <small>CLS</small>	
Low	Properly size images	Potential savings of 176KB
Low	Serve images in next-gen formats	Potential savings of 907KB
Low	Avoid an excessive DOM size <small>TBT</small>	313 elements
Low	Avoid enormous network payloads <small>LCP</small>	Total size was 1.37MB
Low	Ensure text remains visible during webfont load <small>FCP</small> <small>LCP</small>	3 fonts found
Low	Reduce unused CSS <small>FCP</small> <small>LCP</small>	Potential savings of 73.7KB
Low	Reduce initial server response time <small>FCP</small> <small>LCP</small>	Root document took 528ms
Low	Minify CSS <small>FCP</small> <small>LCP</small>	Potential savings of 4.47KB
Low	Avoid chaining critical requests <small>FCP</small> <small>LCP</small>	20 chains found
Low	Reduce unused JavaScript <small>LCP</small>	Potential savings of 58.0KB
N/A	Largest Contentful Paint element <small>LCP</small>	1 element found
N/A	Minimize main-thread work <small>TBT</small>	Main-thread busy for 18ms
N/A	Reduce the impact of third-party code <small>TBT</small>	Total size was 166KB
N/A	User Timing marks and measures	